

CREATE YOUR WORLD

LOVING DETAIL





Y-line



X-line



proline 128



classicline



NUMEROUS **INNOVATIONS**
AND **UNIQUE SELLING PROPOSITIONS**

Y-line
THE **UNIQUE**
HANDLELESS KITCHEN



Y-line



X-line



proline¹²⁸



classicline



Y-line

DESIGN ORIENTATED HANDLELESS

- Base units carcass height 768 mm, ergonomic carcass and low plinth panel
- Base units carcass depth 351 mm, 475 mm, **575 mm**, 715 mm
- With worktop depth in 600 mm as standard (**575 mm**)
- Tall units with continuous fronts up to 2208 mm carcass height
- Optimum loading capacity of the worktop due to the material properties of the handle rails.

X-line

HANDLELESS AND CLASSIC

- Base units carcass height 768 mm, ergonomic carcass and low plinth panel
- Base units carcass depth 351 mm, 475 mm, **575 mm**, 715 mm
- With worktop depth in 600 mm as standard (**575 mm**)
- Tall units with continuous fronts up to 2208 mm carcass height
- Optimum loading capacity of the worktop due to the material properties of the handle rails.
- Also possible with frame front

proline¹²⁸

ERGONOMIC AND DIVERSE

- Base units carcass height 768 mm, ergonomic carcass and low plinth panel
- Base units carcass depth 351 mm, 465 mm, 565 mm, 715 mm
- Tall units with continuous fronts up to 2208 mm carcass height

classicline

FUNCTIONAL AND PRICE-ORIENTED

- Base units carcass height 704 mm with ergonomic plinth
- Base units carcass depth 351 mm und 565 mm
- Tall units with continuous fronts up to 2144 mm carcass height

Y-line_{plus}

- Base units carcass height 832 mm
- Tall units with continuous fronts up to 2272 mm carcass height

X-line_{plus}

- Base units carcass height 832 mm
- Tall units with continuous fronts up to 2272 mm carcass height

proline¹²⁸_{plus}

- Base units carcass height 832 mm
- Tall units with continuous fronts up to 2272 mm carcass height



Y-line

THE UNIQUE HANDLELESS KITCHEN
with the handle profile in aluminium or anodised black in the front. Handle rail in front colour or individual.



X-line

THE CLASSIC HANDLELESS KITCHEN
with a metal C shaped handle profile in 11 colours.



proline¹²⁸

THE ERGONOMIC GRID KITCHEN
in 128 mm raster ergonomic designs with handle are realised.



classicline

THE SMART KITCHEN
Cost-effective, creative planning with a handle can be staged for large and small rooms.



Y-line



X-line



proline¹²⁸



classicline



01

Y-line

The unique handleless kitchen. The **Y-line** profiled panel provides opportunities for a consistent front optic.

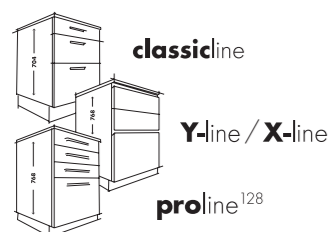


02

4 PRODUCT LINES - 1 PLATFORM - 1 QUALITY



- Consistent programs and colours
- Consistent technology behind the front as well
- Same quality standard



03

CARCASE COMPOSITION AND QUALITY

Carcase 16 mm with 5 mm thick rear panel and solid wood cross beam. Extra strong 18 mm shelves with metal support pegs designed to prevent movement and tilt.



04

CARCASE COLOUR AND EDGE VARIATIONS

- Inside white with more than 140 different visible sides
- Inside and outside in stratus grey pearl with more than 77 edge variations





Y-line



X-line



proline 128



classicline



05

HINGES 107°, DAMPENED

Soft and quiet closing of doors.
- The door damper function is integrated within the hinge and includes metal cover cap.



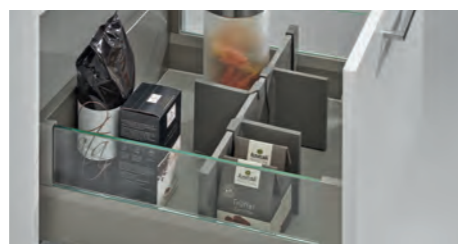
06

DRAWER-PULL-OUT SYSTEM

All product lines in the design of your choice.
Non-slip mats in matching colour.



proStyle
standard



proDesign
optional



proTop
optional

07

DRAWER-PULL-OUT SYSTEM (optional)

The innovative small frame **proTech 2.0** in titanium or anthracite available in all product lines.

Non-slip mats in matching colour.



08

PLANERO

Various storage opportunities for base units and tall units, matching to **proTech 2.0** in titanium or anthracite.





Y-line



X-line



proline 128



classicline

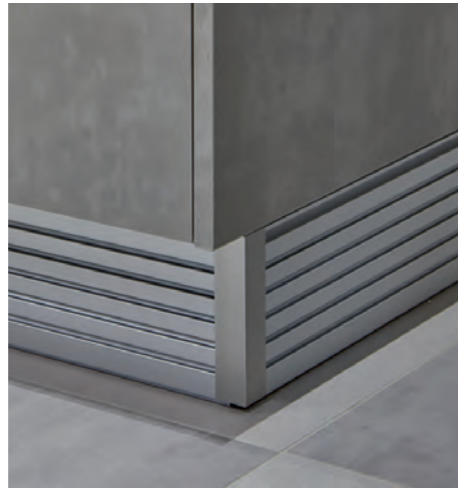


09

PLINTH PANEL

More than 90 versions -
6 ergonomic plinth heights

- 65 mm
- 90 mm
- 115 mm
- 140 mm
- 165 mm
- 215 mm



10

SURROUNDING DESIGN

10, 16, 25 and 50 mm panel,

- 38 mm design panels and panel material in many colour combinations.



11

PERFECT JOIN

Horizontal and vertical lines
of 4 mm for the aesthetic appearance -
in all product lines.



12

OPENING ASSISTANCE

- Drawers and pull-outs: mechanical or electrical
- Wall units: mechanical or electrical
- Hinge doors: mechanical





Y-line



X-line



proline¹²⁸



classicline



13

WALL UNITS

351 mm deep

- usable internal depth = 329 mm
- Cabinet bottom in full depth up to the wall for a perfect finish

565 mm or 575 mm deep

- usable internal depth = 543 mm



14

HANDLES AND KNOBS

Handleless is not an obligation, our diverse collection offers a large selection of current trends.



15

EXPANDED STANDARD ASSORTMENT

- 1440 mm high wall units
- Wall-hung base units in **X-line**, **Y-line** and **proline**¹²⁸
- 1500/1800 mm wide base units
- Wall units 351 mm or 565/575 mm depth



16

FRONT EXTENSION

- To the floor: Hinged doors and pull-outs up to a maximum of 15 mm above the floor
- To the top: hinged doors extended above the carcass, up to a maximum of 230 mm





Y-line



X-line



proline 128



classicline



17

MORE THAN 220 FRONTS



In different variants and designs: matt/glossy fronts, wood/stone decors, frame/lamella fronts and much more.



18

UV-LACQUER FRONTS HIGH GLOSS



- The unique real lacquer front in PG 2
- No lacquer laminate!

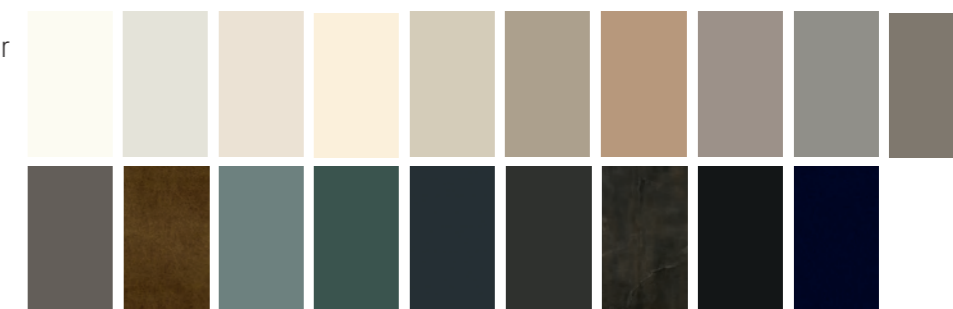


19

ULTRA MATT LACQUER FRONTS



- With "Sense of Touch" surface in PG 2
- Backside finished in door colour
- UV Lacquer, no lacquer laminate
- Easy to clean due to the special surface

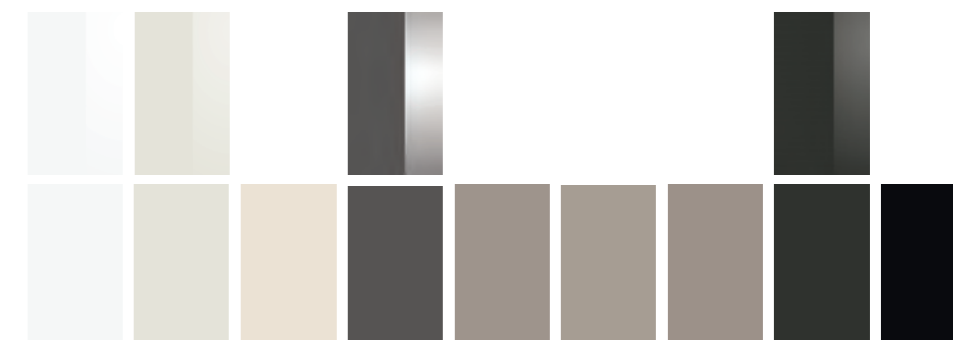


20

ORGANIC GLASS FRONTS



- In glossy and matt finishes
- Colour-stable, scratch-resistant, hygienic, easy care, of high quality and shock-resistant
- Backside finished in door colour





Y-line



X-line



proline¹²⁸



classicline



21

MORE THAN 50 BASIC COLOURS

For fronts, visible sides and plinths – without surcharge in all product lines.



22

EDGEBANDING - FRONT, CARCASE, SURROUNDING

Improved thermal resistance through physical/chemical setting.
Optimum protection against moisture intrusion.

PURVerklebung

23

RAL- AND NCS-COLORS

Wide colour spectrum for adaptation to individual needs and endless combination possibilities.

- 192 RAL-Classic-Colours
- 1950 NCS-Colours (Natural Colour System)



24

LIVING AND DRESSING

Individual planning in a uniform style possible across all living areas.

More inspiration in the brochure „Living Spaces“!





Y-line



X-line



proline 128



classicline



GARANTY AND CLIMATE NEUTRALITY

- 5-year manufacturer's guarantee on kitchen furniture
- PEFC, GS, ISO 9001, ISO 14001, ISO 50001, EMAS, Golden M, Climate Pact, Climate-neutral furniture production and Furniture made in Germany certification
- Annually updated environmental statement



Y-line
THE **UNIQUE**
HANDLESS KITCHEN



THE ULTIMATE ALL-ROUNDER
THE UTILITY ROOM