

CREATE YOUR WORLD

ENVIRONMENTAL STATEMENT

2024

pronorm Einbauküchen GmbH
Höferfeld 5-7
32602 Vlotho

pronorm
EINBAUKÜCHEN

TOPICS

1. Foreword by the management	4
2. company portrait	6
a. Presentation	
b. company history	
c. company data	
d. company activities	
3. Environmental policy and environmental management system	14
a. Environmental management system	
b. Environmental policy	
c. Environmental organisation chart	



4. Environmental aspects and environmental performance	20
a. Aspects (direct/indirect)	
b. Performance	
i. Input	
ii. Output	
c. Environmental targets (environmental programme)	
5. Carbon footprint - presentation of the overall result	31
6. Self-declaration	32
a. Declaration of conformity and next deadlines	
b. Contact person and contact details	
7. Declaration of validity	33





ROGER KLINKENBERG
Managing Director

THORSTEN GÖSLING
Managing Director

pronorm attaches great importance to protecting the environment. For this reason, as early as 1996 we decided to participate in the Council Regulation (EC) No. 1836/93 of 29 June 1993 on voluntary

participation in a Community eco-management and audit scheme in order to ensure environmentally friendly production and further development of our company.

1 FOREWORD OF THE MANAGEMENT

The requirements of the revised edition of Regulation (EC) No. 1221/2009 of the European Parliament and Council of European Parliament and of the Council of 25 November 2009 on the voluntary participation by organisations in a Community eco-management and audit scheme, also known as EMAS III - are also fully met by pronorm. This is made clear by the renewed validation of the environmental statement.

pronorm is prepared to take personal responsibility in the area of ecology with regard to all activities and the possible consequences. To this end, our installed environmental management system has been filled with life and is constantly being optimised.

A key element of our system is the commitment to continuous improvement in operational environmental protection. We aim to fulfil this obligation through specially developed environmental programmes.

The person responsible for management monitors the implementation of the environmental programmes and documents progress in the course of meetings with the management representatives.

The publication of this environmental statement is intended to inform the general public in detail about the environmental factors of our activities, environmental policy, environmental objectives and environmental programmes.

The contents of this environmental statement are checked by neutral environmental auditors and documented in the form of a declaration of validity.

Vlotho-Uffeln, 14th June 2024



THORSTEN **GÖSLING**
Managing Director



ROGER **KLINKENBERG**
Managing Director

2 COMPANY PORTRAIT

A PRESENTATION

pronorm Einbauküchen GmbH is a company of the DMG Group in Waalwijk in the Netherlands. pronorm is the supplier for individually plannable fitted kitchen systems in the important middle and upper price segment.

pronorm Einbauküchen GmbH fulfils all the requirements of a brand culture. Since 2022, they have taken the next step in consolidating themselves in the market with their own brand i-luminate®.

The main market areas are Germany and the Netherlands. Furthermore, we export to the traditional kitchen export countries Belgium, Great Britain and Switzerland. In addition, the market in the USA has been opened up since 2022.

As a partner of the competent specialist trade for specialist kitchen trade, pronorm relies on the cooperation with the kitchen specialists.

With our comprehensive, wide-ranging and design-oriented fitted kitchens, we are clearly oriented towards the demands and wishes of our target groups.

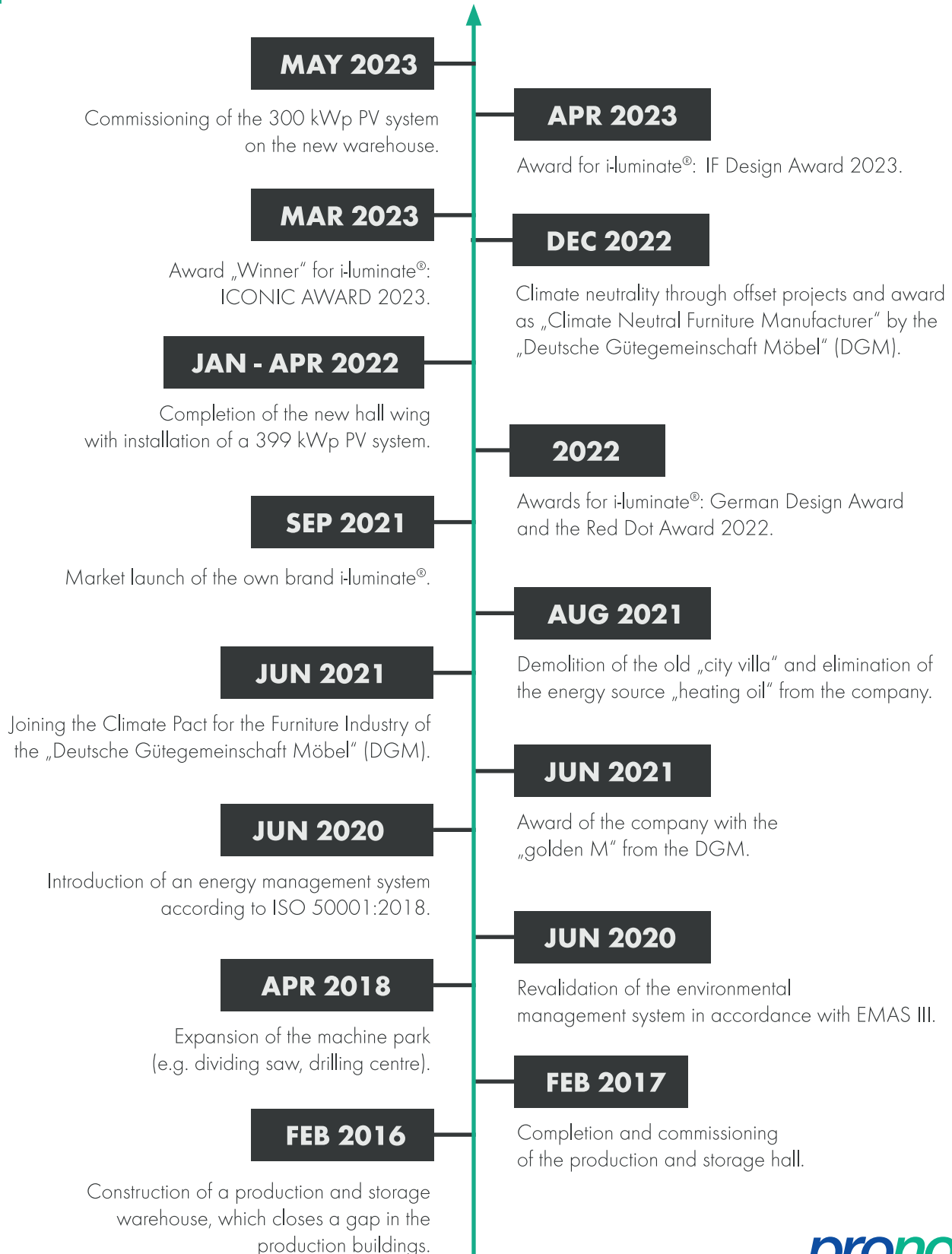
The guiding principle of customer orientation our actions.

Consistent customer orientation and the highest design and quality standards are our business philosophy.



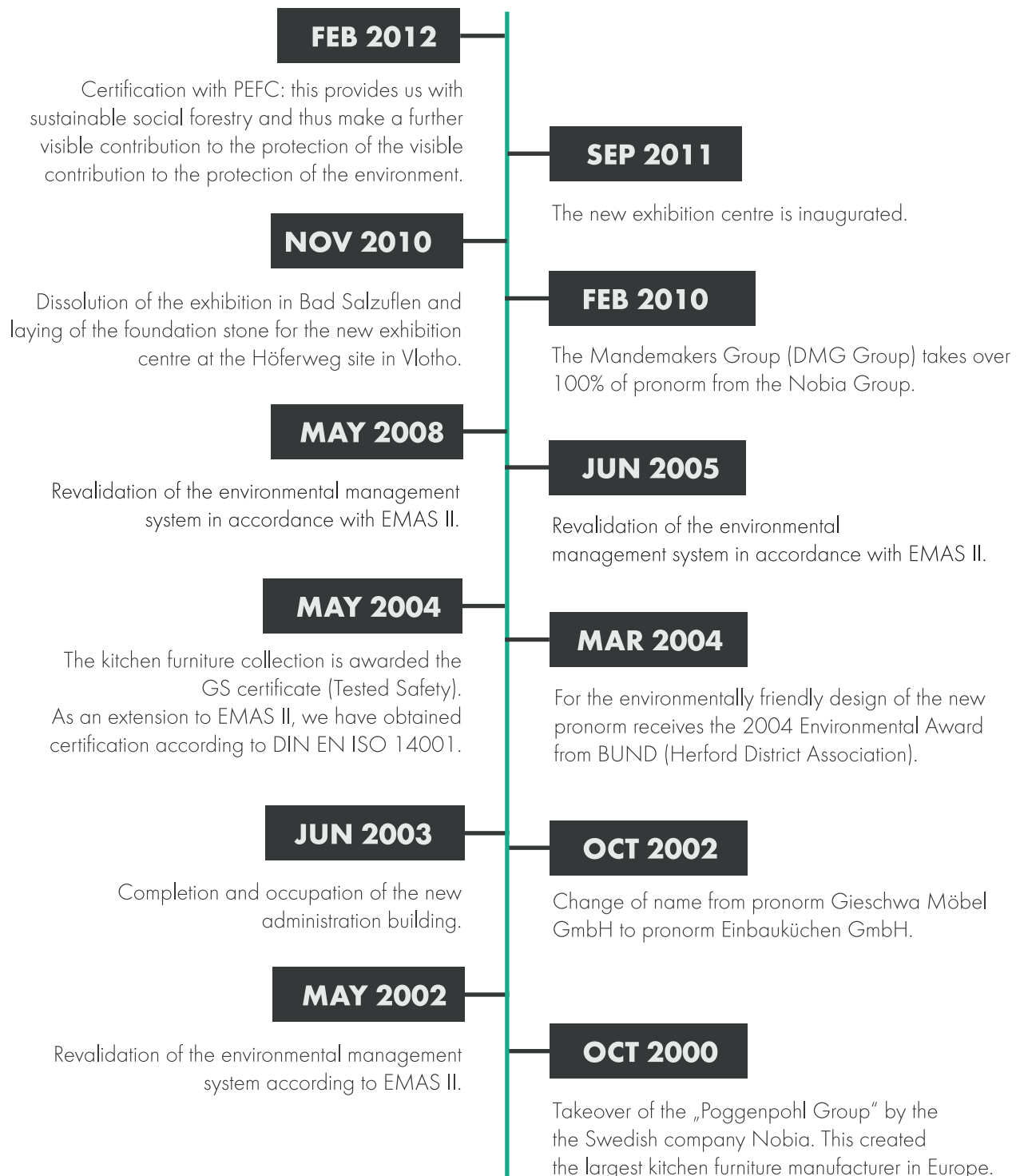
2 COMPANY PORTRAIT

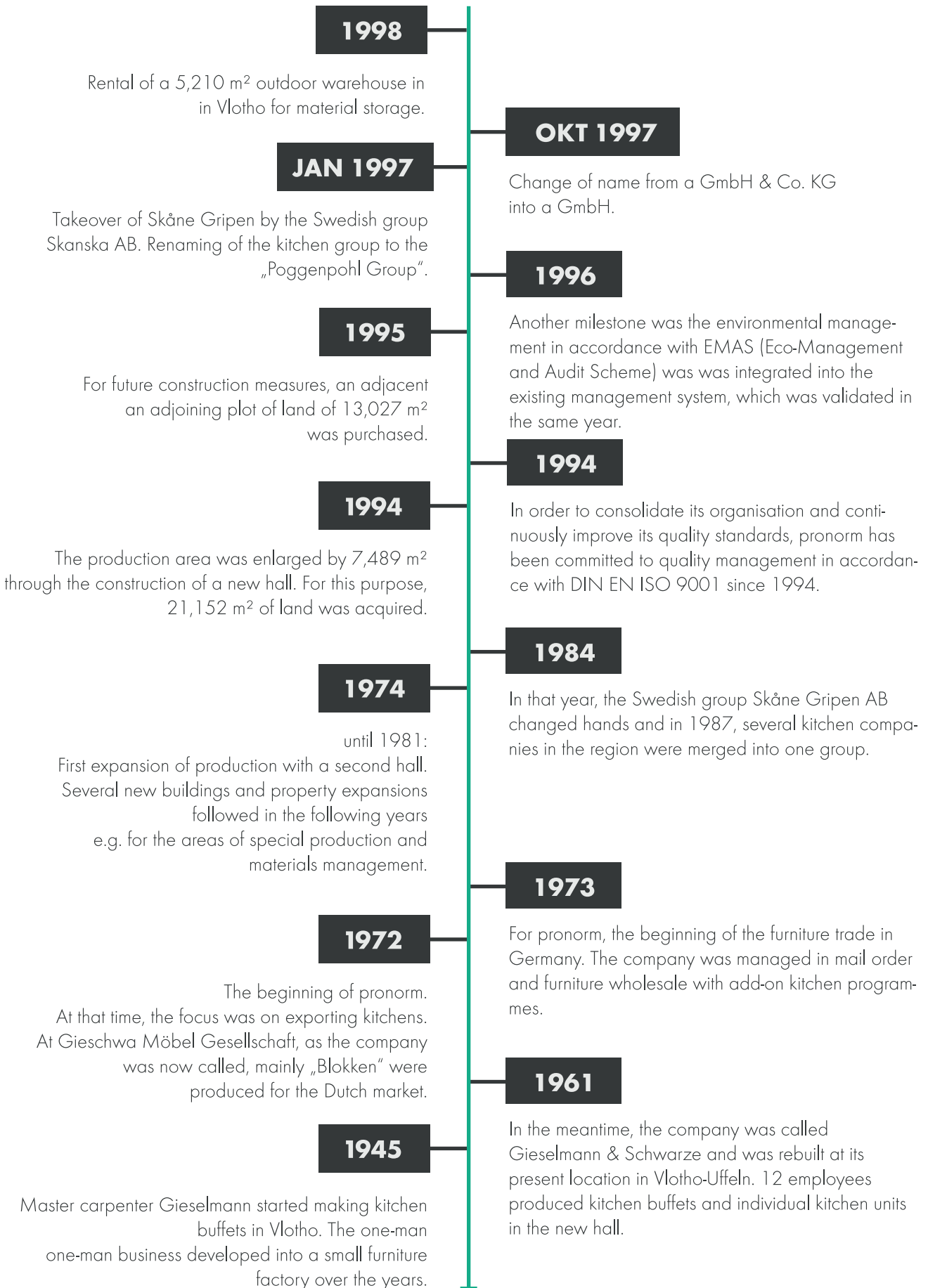
B COMPANY HISTORY



2 COMPANY PORTRAIT

B COMPANY HISTORY





2 COMPANY PORTRAIT

c COMPANY DATA

	2021	2022	2023
Average number of employees	311	331	346
Investments	4.548.258 €	11.967.312 €	8.638.339 €
Total area	63.915 m ²		
Built-up area	30.172 m ²		
Paved area	17.547 m ²		
Green area operation	4.991 m ²		
Green area administration	9.450 m ²		
Heated area	28.641 m ²		



2 COMPANY PORTRAIT

D CORPORATE ACTIVITIES

We produce our fitted kitchens at our site in Vlotho, in the district of Uffeln, Höferweg 28 and Höferfeld 5-7, which is located in a healing spring protection area of protection level IV for the health resort area of Bad Salzuflen / Bad Oeynhausen. This classification causes us to pay special attention to the corresponding environmental regulations.

Our premises are embedded in the floodplain of the river Weser, in the industrial area „Höferweg“. between a residential area on the Mindener Straße and a former gravel pond, which is used as fishing water.

For the transport of our products, the motorway A2 with the intersection „Bad Oeynhausen“ can be reached in a distance of approx. 7 km.

There has been no previous commercial or industrial use of our company premises in the past, so there is no need to worry about soil contamination or contaminated sites.

The machine room department produces carcass sides and carcass shelves within the prefabrication. Fixed chipboard dimensions are trimmed to size, edged, drilled and doweled.

All wood chips and dust produced during processing are extracted and used to heat the production halls and the administration building.

The finished cabinet sides and shelves are fed to the assembly departments.





Approximately 15 % of the entire range of fronts is stored in the range of fronts, all of which are ordered from our suppliers as required. In accordance with our quality guidelines, all doors and drawer fronts of a kitchen are commissioned by our employees. Automatic handle and fitting pre-assembly is carried out on CNC-controlled door and drawer front drilling machines. The processed front parts are then made available on the assembly lines.

In the future, we will manufacture all base, wall, special and tall cabinets for about 155 individually planned fitted kitchens. The carcass sides and shelves are assembled

according to type and glued together. Doors, drawers and pull-outs are assembled at the assembly workstations. For the most part, the desired interior fittings and cupboard accessories are already installed here.

The sturdy cardboard packaging offers protection against damage during further transport of the furniture.

In the dispatch department, up to 25 lorry cases are loaded with furniture every day. All parts of a fitted kitchen are stowed in the furniture cases according to commission. Only qualified forwarding agents are commissioned to deliver the kitchens to our customers.

3 ENVIRONMENTAL POLICY AND MANAGEMENT SYSTEM

A ENVIRONMENTAL MANAGEMENT SYSTEM

pronorm's environmental management system meets the requirements of Regulation (EC) No. 1221/2009 of the European Parliament and of the Council of 25 November 2009 on the voluntary participation by organisations in a Community eco-management and audit scheme (EMAS). In the course of updating the environmental statement, Regulation (EU) 2018/2026 of 19 December 2018 has been taken into account.

The parallelism with quality management in accordance with DIN EN ISO 9001, environmental management to DIN EN ISO 14001 and energy management to DIN EN ISO 50001 means that all integrated internal and external procedures and processes in the management systems are regulated in a management manual.

Regular dialogue in the management committee, in which all representatives of the individual systems participate, ensures continuous improvement of environmentally relevant data and facts in cooperation with the individual departments.

In order to achieve environmental objectives and targets, procedural instructions have been drawn up to regulate the development of environmental programmes.

The necessary information channels (procurement, processing and dissemination of information) are also defined there.

The implementation of the programmes is monitored and controlled by the person responsible for management. In the event of deviations, he or she initiates appropriate corrective measures. The Management Committee is a working group within pronorm fitted kitchens that implements the environmental policy defined by the management. The Management Committee is made up of the following members:

- Management Officer
- Environmental Management Officer
- Energy Management Officer
- Quality Management Officer

Internal Audits | Environmental Audit:

In accordance with a defined system (audit plan), all areas with environmentally relevant activities are checked for compliance with the defined procedures and processes. Any deviations found are documented in audit reports, corrective measures are agreed, listed and evaluated by the management. All those responsible are continuously informed about the current status.



3 ENVIRONMENTAL POLICY AND MANAGEMENT SYSTEM

B ENVIRONMENTAL POLICY

pronorm Einbauküchen GmbH has drawn up its environmental policy on the basis of guiding principles. The core of our responsibility is the sustainable use of energy and resources. The continuous improvement of our environmental performance is as important to us as a high product quality, the increase of energy efficiency and the satisfaction of our customers and employees.

We are committed to meeting legal requirements related to our environmental aspects, resource use and energy consumption. Our environmental policy is determined by the following guiding principles:

1. ecological, economical, safe

Our goal is to manufacture safe products at a high quality level using economical and safe production processes and to market them successfully in a competitive environment. In doing so, economic benefits should not take precedence over human health and safety and the protection of the environment.

2. Responsibility in dealing with resources and environmental pollution

Our corporate responsibility includes developing products that are safe to use, using all resources sparingly and avoiding as far as possible any impact on the environment and our employees.

3. environmental protection from „top“ to „bottom“

For us, environmental protection is a management task. Supervisors play an important role as role models. Responsibility begins with the top management of our company. The divisional managers assume special responsibility for the realization of our environmental principles and ensure that they are maintained and implemented at all levels of the company. The management appoints representatives and committees for the introduction, maintenance and control of all measures with environmental relevance.

4. motivation for environmental awareness

Employees are trained in accordance with their tasks with regard to environmentally relevant issues in order to promote a sense of responsibility, motivation, and the ability to communicate, act and make decisions.

5. environmental performance in view

We consider the potential environmental impact as early as the development stage of products and processes. The environmental impact of our activities is registered, assessed and reduced to a minimum in a continuous improvement process. We are guided by the best available techniques in each case, while maintaining economic justifiability.

Compliance with legal requirements is a minimum criterion.

6. control and correction

Management, through its management representative, reviews the effectiveness of the management system, compliance with environmental policy, and fulfillment of the environmental program.

To this end, past, current and planned activities are reviewed, as are aspects of non-conforming operation. Safety concepts form a basis for the further development and operation of our plants.

7. emergency organization

We undertake to prevent accidents or abnormal operating conditions that could harm the environment by means of suitable safety equipment and organizational measures. Together with the authorities, emergency plans are kept up to date in order to keep accident-related emissions low.

8. suppliers and service providers

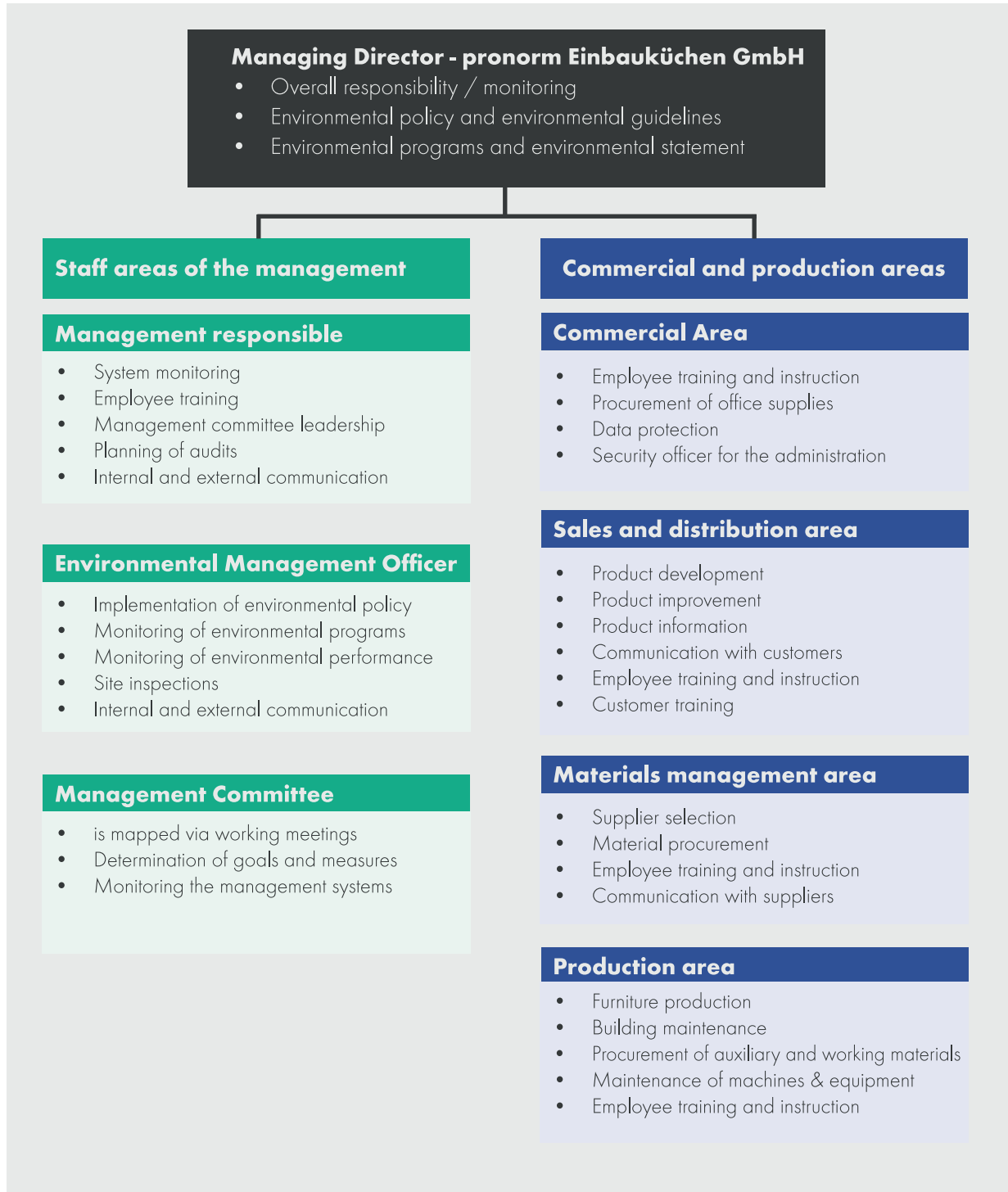
When we use services from other companies, we satisfy ourselves of the expertise and reliability of our partners. In particular, we involve our suppliers and service providers in our environmental efforts. related efforts. Arrangements are made to ensure that contractors operating on our premises maintain at least the same high environmental standards as are customary in our company.

9. information policy

We are committed to an open dialog with employees, authorities and the public in order to achieve improvements and strengthen confidence in our responsible actions. We provide regular information on our environmental protection activities in an environmental statement.

3 ENVIRONMENTAL POLICY AND MANAGEMENT SYSTEM

C ENVIRONMENTAL ORGANIGRAM





4 ENVIRONMENTAL ASPECTS AND PERFORMANCE

Current assessment of the company's activities with regard to their environmental impact under normal operating conditions. Here, the direct environmental aspects are systematically recorded and evaluated with regard to their environmental relevance and influenceability according to the A, B, C analysis (high, medium, low). The evaluation is carried out annually, taking into account the current key environmental figures and the environmental programmes in a verbally argumentative manner.

Classification of environmental relevance compared to the previous year:

A = high environmental relevance, or if legal requirements are exceeded. In these cases, measures must be formulated (environmental programmes).

B = medium environmental relevance, if environmental indicators or balance sheet data deteriorate significantly.

C = low environmental relevance: no negative changes in environmental indicators or accounting data compared to the previous year.

Influenceability rating:

A = high influenceability: the prerequisites are technically and financially given.

B = medium influenceability, if the technical prerequisites are given, but these are outside the current budget.

C = low influenceability: technically no possibilities for change.

DIRECT ENVIRONMENTAL ASPECTS

Direct environmental aspect	Environmental relevance	Influenceability	Environmental impact: e.g. air pollutants, wastewater, waste, soil contamination, noise, heat, resource consumption
Noise			
external (Neighbourhood noise)	C	B	No special effects! Both the noise immission guideline values and the permissible peak levels are complied with at all measurement locations.
internal (production noise)	C	B	No particular effects are known. The noise areas have been determined and labelled. Hearing protection is provided free of charge to the employees working there.

The issue of noise and protection against it is regularly analysed, assessed, updated and regularly analysed, assessed, updated and documented throughout the company's conversion phase. The person responsible for this is the safety officer in the company.

Direct environmental aspect	Environmental relevance	Influence-ability	Environmental impact: e.g. air pollutants, wastewater, waste, soil contamination, noise, heat, resource consumption
Emissions			
Boiler house	B	A	The new boiler house runs in accordance with the specifications of the district government and is documented with a report from TÜV-Nord. No further changes or adjustments are planned for the time being.
Gas heating Administration	B	B	The administration's basic heating load is covered by the production wood firing system and an installed heat pump via underground pipes. The gas condensing boiler heating is switched off. Only the exhibition hall is heated by a gas boiler. In 2023, however, this has taken over the supply of the administration due to the modernisation measures on the boiler house.
Gas heating exhibition building	B	B	
Extraction systems (I and II)	B	B	The rescheduling and modernisation of extraction system I , (new building) has been completed and finalised. However, the increased demand has led to an increase in electricity requirements. In addition, the power consumption for the new building was increased so that the extension cannot replace extraction unit II (old building). replace the old building. This outdated extraction system is now also in operation and should be modernised.
Accident			
Fire: Extraction system	C	C	A spark extinguishing system is integrated into the is equipped with a spark extinguishing system.
Fire: Company premises (total)	B	C	Neither machines nor materials harbour any extraordinary environmental risks in the event of a fire. An incipient fire is contained by the sprinklers and the extinguishing water retention is generously dimensioned. The municipal fire brigade is automatically alerted and fire brigade personnel are familiarised with the site on an annual basis. The fire protection and emergency plan has been updated by the safety expert. The wastewater pipes can be drained in the event of an accident so that no water-polluting substances can be discharged.
Energy and resource consumption:			
Waste	C	C	The quantities of waste are in good proportion to the to the production volumes. A constant review of the the use of more environmentally friendly packaging and materials is carried out. Since 2023, a waste officer has been appointed in the company.
Waste water	C	C	No special effects. As no water is required for production no water is required for production, only sanitary waste water is produced.
Electricity (electrical energy)	C	B	Electricity consumption is rising continuously. This is mainly due to the expansion of production. However, the increased energy volumes were still low due to the continuous modernisation work. Energy supplies were switched to green electricity and supplemented by generation from a PV system.
Resource consumption (wood)	C	B	No special effects! Wood is a renewable raw material. Wood from sustainably managed forests is used. The offcuts from the chipboard are utilised for energy on site or by a service provider.

INDIRECT ENVIRONMENTAL ASPECTS

Indirect Environmental aspect	Environmental relevance	Influencability	Assessment of the product-related impacts
Product range	B	C	Due to the market situation and customer structure, there is only have a limited influence.
Use of raw materials (development/procurement)	C	C	The wood content of our products comes from controlled managed and assessed according to the PEFC certification system. The company uses 100 % wood from sustainable forestry is used.
Disposal after service life	C	B	No end customer contact, only industry solutions would be possible, currently only bulky waste disposal.pronorm is represented in the associations and is actively involved in actively participates in corresponding specifications.
Service life and repairability	C	C	In view of the high quality of the products as well as the modular design and the resulting good the kitchens can be expected to have long life cycles. As a result of fashion trends/innovation cycles, there is little scope for influence.
Packaging	B	A	When it comes to packaging and transport protection increasingly favoured for packaging and transport protection. This is recyclable and can be reused immediately if necessary.
Transport	C	C	Only limited influence is possible due to standardised little influence is possible.
Customer information, environmental	C	C	Only retailer specifications; direct influence by and on end customers on end customers is only possible to a limited extent.



4 ENVIRONMENTAL ASPECTS AND PERFORMANCE

B PERFORMANCE

This page lists environmental indicators relating to the number of employees, the number of furniture types produced, the amount of waste generated and the calendar year, for example. The reporting year is compared with the two previous years are compared. The trend over the past 3-year period is shown.

Description of the key figure	2021	2022	2023	Comment
Average electricity consumption per furniture type (in-house production) [KWh/type]	9,78	10,8	13,03	Electricity consumption is rising, while production figures are higher. However, significantly more was consumed over the year as a whole due to various conversion and modernisation measures.
Packaging per furniture type [kg/type]	1,40	1,40	1,82	The key figure has deteriorated. There was a significant increase in packaging costs in relation to the pieces of furniture actually sold.
Compressed air generated per furniture type (in-house production) [m ³ /type]	8,53	9,2	13,51	The demand for compressed air increased. This is due to an increase in the compressed air-dependent machinery.
Printer and copier paper consumption [sheets/employee]	11.576	12.387	8.395	A new printing system was installed in the administration department, which has optimised employees' printing behaviour. For production, much of the work has been converted to paperless recording.

Further key figures will be created in 2024.

4 ENVIRONMENTAL ASPECTS AND PERFORMANCE

B PERFORMANCE i INPUT

Note in advance: Reasons for significant deviations in values compared to the previous year are listed in the table. The accuracy of some of the key figures shown has been increased by decimal places to make changes more visible.

Input Höferweg 28 und Höferweg 5-7	2021	2022	2023	Comments
1. Raw materials (t)				
1.1 Chipboard, furniture fronts, MDF boards	24.137,64	24.861,77	18.427,41	Since 2018, pronorm has been supplied exclusively with wood from sustainable cultivation (PEFC).
1.3 Wood chips	0	22,69	17,4	(additional purchase for heating purposes)
2. Packaging (t)				
2.1 Paper, cardboard, carton	373,00	384,19	464,84	Significantly higher quality assurance measures (reduction in the number of return rates) have increased packaging costs.
2.2 Wood (base reinforcement etc.)	20,94	21,57	19,99	
2.3 PE corner protection	14,52	14,96	13,87	
2.4 Films (PE bubble wrap, PE shrink film, etc.)	43,03	44,32	41,09	
2.5 Steel strapping	0,06	0,06	0,02	
2.6 PP strapping	8,91	9,18	4,15	
2.7 PP adhesive tape	3,70	3,18	3,53	
2.8 Wrapping film for shipping	3,91	4,03	3,74	
3. Functional fittings / external fittings (t)				
3.1 Metals (hinges, screws, door handles etc.)	2.476,30	2.550,59	2.364,65	The key figure has fallen in line with the reduced production figures. The decision not to use plastic was taken.
3.2 Plastic (e.g. door handles)	0	0	0	

Input Höferweg 28 und Höferweg 5-7	2021	2022	2023	Comments
4. Auxiliary and operating materials (t)				
4.1 Lacquers, stains, hardeners, solvents (without merchandise)	0,089	0,092	0,085	Both key figures can be described as stable.
4.2 Glues, adhesives, cleaners	14,48	14,83	14,17	
5. Water (m³)				
5.1 No water is used in production. Consumption is therefore limited to the sanitary facilities. Quantities from a rainwater harvesting system are also used for irrigation.				
6. Energy / Heat (MWh; t)				
6.1 Electricity (MWh)	3.258	3.692	3.939	Further expansion of systems and increased compressed air requirements will lead to a further increase in total electricity demand.
6.1.1 PV electricity generation [kWh]	-	-	301.804	Total generation of the PV system
6.1.2 PV own use [kWh]	-	-	246.168	Own use, in 6.1 included
6.1.3 Surplus feed-in [kWh]	-	-	55.636	Grid feed-in
6.2 Heating oil (mobile heating container) (litres)	39.336	31.553	0	The energy source heating oil has been completely eliminated from the companies.
6.3 Heating gas (reserve heating administration) (kWh)	134.628	381.206	656.726	The administration's reserve heating system was decommissioned. The connection to the production heating network has been completed, but was not available due to the modernisation. This was supplied exclusively via the gas heating of the exhibition hall.
6.3.1 Heating gas exhibition (m ³)	102.319			
6.4 Wood chips (own production) (tonnes)	1.031,49	1.236,69	1.004,00	The consumption values in 2023 cannot be clearly quantified due to temporary trial operations and optimisation measures. Only a qualitative qualitative estimate of the operating technology.
6.5 Compressed air (m ³)	2.841.834	3.139.722	4.081.704	The demand for compressed air has increased significantly. This is due to a significant expansion of the machine park.

4 ENVIRONMENTAL ASPECTS AND PERFORMANCE

B PERFORMANCE ii OUTPUT

Note in advance: Reasons for significant deviations in values compared to the previous year are listed in the table. Since 2023, pronorm Einbauküchen GmbH has employed a waste manager, who was also responsible for processing the figures from 2022. was already responsible. In future, further optimisation measures are planned in the area of waste optimisation measures are planned. In the ongoing modernisation and conversion process in the company, however, more waste is generated in some areas than would be expected in a „normal year“. would be expected in a „normal year“.

Output Höferweg 28 und Höferweg 5-7	2021	2022	2023	Comments
1. Products (units; t)				
1.1 Furniture type (unit)	333.177	340.714	302.220	Decrease in production figures by approx. 11%
2. Waste for recovery (t)				
2.1 Requiring special monitoring for recovery -disposal-				
2.2 Not requiring monitoring for recovery				
2.2.1 Wood-based materials (without PVC)	19,46	40,52	1.154,73	Due to production changes with automated cutting, there are increased quantities of offcuts that can no longer be used for products. There were also additions of waste code numbers due to a change of disposal company. In future, there will be changes to the key figures in 2024.
2.2.3 Waste paper, cardboard, cardboard (incl. document destruction)	115,6	115,21	105,69	Less paper was used in the company.
2.2.4 Metal	24,73	159,81	61,13	Increased quantities due to demolition of villa and construction of new hall.

Output Höferweg 28 und Höferweg 5-7	2021	2022	2023	Comments
2.2.5 Films (plastic packaging), incl. plastic strapping, rigid foam and small plastic parts	15,66	7,54	13,72	Less wood in the supply chain as outer packaging, but again an increased proportion of plastic. In this case, quality assurance reasons are offset by environmental aspects.
2.2.6 Wooden packaging	54,08	46	6,82	
2.2.7 Electronic devices	0	0	0	This type of waste is not disposed of annually.
2.2.8 Bulky waste (unassembled furniture)	41,15	0	0	(key figure dependent on measures)
2.2.9 Concrete	4,32	40,25	5,34	Remodelling work significantly lower than in the previous year.
2.2.10 Building rubble	10,46	97,2	15,58	
2.2.11 Commercial municipal waste (mixed collection)	51,4	55,31	19,04	The change of disposal company led to changes in the disposal key. disposal keys. Overall, however, a decrease can be recognised.
2.2.12 Mixed packaging	51,76	59,59	57,38	
2.2.13 Bottom ash and boiler ash, incl. fly ash	19,42	11,56	12,4	Note: Ashes are watered before transport in order to minimise dust formation during tipping. Manual watering can cause significant fluctuations in the weight quantity. The cut-off period can also have an influence on the quantity. The key figure now settles at a new level after modernisation.

3. Waste for disposal (t)

3.1 requiring special monitoring for disposal

3.1.1 Oils, oil-containing absorbents, etc.	-	-	-	There is no annual disposal process takes place.
3.1.2 Paints, varnishes (t)	-	0,47	-	
3.1.3 Toner waste	-	0,04	0,08	
3.1.4 Contaminated packaging	-	0,43	-	
3.1.5 Gases containing hazardous substances in pressurised containers	-	-	0,04	
3.1.6 Batteries and accumulators	-	-	0,12	

Output Höferweg 28 und Höferweg 5-7	2021	2022	2023	Comments
4. Waste water (m³)				
No water is required for production processes. Only the quantities of service water for sanitary facilities etc. are used here.				
5. Emissions wood combustion plant				
	Max value	Limit value	Max proportion	Emission measurements from 09/02/2023, Values in mg/Nm ³
5.1 CO	63	220	28,6 %	Below the limit values in all areas. The next emissions measurement will be in 2025.
5.2 NO _x	190	370	51,4 %	
5.3 Total C	1,7	10	17 %	
5.4 Dust	0,5	30	1,7 %	
5.5 HCl	2,7	45	6 %	
5.6 HG	0	0,05	0 %	
5.7 NH ₃	22,6	30	75,3 %	
The greenhouse gas emissions emitted can be found in the greenhouse gas balance in chapter 5. This is updated and published every two years.				

4 ENVIRONMENTAL ASPECTS AND PERFORMANCE

C ENVIRONMENTAL GOALS (ENVIRONMENTAL PROGRAMME)

UZS-Nr.	Required environmental objective	Associated environmental guideline	Individual targets / measures	Status
2019-1	Conversion of all lighting to LED technology (incl. smart switching)	Guiding Principle 2: Responsibility in dealing with resources and environmental pollution.	Department by department, the old fluorescent tubes are being replaced with economical and long-lasting LED lighting.	Only the office wing of production and in the storage cellar, outdated lighting technology is still in use.
2020-1	Reduction of primary energy consumption in production	Guiding principle 2: Responsibility in dealing with resources and environmental pollution.	Reducing the power consumption of the extraction system and increasing efficiency As part of the construction of a new production hall, the existing existing building insulated.	The extraction system (new building) has been modernised. However, the significant increase in production has increased the use of primary energy. In future, the second extraction system (old building) is to be modernised.
2021-2	Insulation of the external facade, production	Guiding principle 1: Ecological, economical, safe.	In the course of batch size 1, carcass production and replacement of new machines and systems with high-efficiency motors.	External insulation was applied to the external facade with „80 - 100 mm“ external insulation was applied. 90 % completed. The east side will be insulated by 2024.
2022-1	Reduction of electricity consumption in production	Guiding principle 2: Responsibility in dealing with resources and environmental pollution.	In the course of batch size 1, carcass production and replacement of new machines and systems with high-efficiency motors.	Planning has started in started in 2021. Completion expected by the end of 2023.
2024-1	Conversion of all lighting to LED technology (incl. smart switching)	Guiding principle 2: Responsibility in dealing with resources and environmental pollution	The administration is to be converted to modern LED technology.	Planning will begin in 2024. An implementation period will then be set.

The basis for the objectives listed here is the company's 5-year plan. Measures that must or can be implemented are evaluated, prioritised and backed up with an investment plan. Specific targets are transferred from this plan to the environmental programme and mapped.



5 Co₂ BALANCE - PRESENTATION OF THE OVERALL RESULT

Results

In total, the company issues in the year under review	1.267,00	tons of CO ₂ e
Converted per employee, this results in a value of	3,83	tons of CO ₂ e
Partial result: Scope 1 and 2	320,55	tons of CO ₂ e
Partial result: Scope 3	945,56	tons of CO ₂ e
CO ₂ e per km business trip	0,20	Kg CO ₂ e
CO ₂ e per employee commuting	1,36	tons of CO ₂ e





Compared to other companies of your size and industry, the emission value per employee is in the **lower** range.

Summary table of the results

Assignment	Emissions by category	[t CO ₂ e]	%-Portion
Scope 1	Heat consumption	165,14	13,04%
	Fuel consumption in the company	155,41	12,27%
	Gas leaks (Refrigerant)	0,00	0,00%
	Direct emissions from industrial processes	0,00	0,00%
	Total	320,55	25,32%
Scope 2	power consumption	0,00	0,00%
	district heating / district cooling	0,00	0,00%
	Total	0,00	0,00%
Scope 3	Upstream energy-related emissions	223,71	17,67%
	Business trips and hotel accommodation	37,56	2,97%
	Work routes and home office of the employees	428,70	33,86%
	Water / Waste generation in the company	145,45	11,49%
	paper consumption	30,27	2,39%
	Consumables production	31,25	2,47%
	Third party exchange logistics	0,00	0,00%
	Hardware	48,63	3,84%
	Total	945,56	74,68%
Total	1.266,11	100%	

The overview of the results of the corporate carbon footprint reveals that at **pronorm Einbauküchen GmbH** above all, the emission category **commuting and home office of the employees** makes a significant contribution the overall balance. But also in the emission categories **upstream energy-related** emissions, as well as **heat consumption** and **fuel consumption in the company** result in greenhouse gas emissions.

Your footprint in comparison

 <p>149 people in Germany cause about the same amount of emissions as your company per year.</p>	 <p>487 trees are needed around the calculated CO₂-Emissions of your company to bind.</p>
 <p>6.029.088 Kilometers you can with that Driving and doing the same cause a lot of CO₂ like you Company.</p>	 <p>175 times a person flies around the world and emits as much CO₂ as your company causes.</p>

6 SELF-DECLARATION

pronorm Einbauküchen GmbH confirms that it fulfils all legal and EMAS requirements.

In addition, an authorised environmental verifier has reviewed the environmental management system for the pronorm Einbauküchen GmbH site and declared this updated environmental statement to be valid.

Date for the next simplified environmental statement: 30.06.2025

Date for the next consolidated environmental statement: 30.06.2026

Further information about this environmental statement and about the environmental work of our company:		Publisher of the environmental statement: <i>pronorm Einbauküchen GmbH</i> Höferfeld 5 - 7 32602 Vlotho Tel.: 05733-979-0
Herrn Stefan Dresing Management representative Tel.: 05733-979-340 Fax: 05733-979-4155 E-Mail: stefan.dresing@pronorm.de	Herrn Daniel Steube Environmental Management Officer Tel: 05261-255-368 Fax: 05261-255-334 E-Mail: umb@pronorm.de	Herrn Thorsten Gösling Managing Director Tel.: 05733-979-391 Fax: 05733-979-4391 E-Mail: thorsten.goesling@pronorm.de

7 VALIDATION

DECLARATION OF THE ENVIRONMENTAL VERIFIER ON THE ASSESSMENT AND VALIDATION ACTIVITIES

The undersigned environmental verifier Michael Frink,

EMAS environmental verifier with the registration number DE-V_0088 accredited and approved for the scope ...C31.02 (NACE code), confirms that the site or the entire organisation, respectively, as described in the updated environmental statement of the organisation

pronorm Einbauküchen GmbH
Höferfeld 5 - 7
32602 Vlotho
for the Vlotho-Uffeln site

with the registration number DE-108-00095

complies with all requirements of Regulation (EC) No 1221/2009 of the European Parliament and of the Council of 25 November 2009 on the voluntary participation by organisations in a Community eco-management and audit scheme (EMAS), Regulation (EU) 2017/1505 of 28 August 2017 amending Annexes I, II and III and Regulation (EU) 2018/2026 of 19 December 2018 amending Annex IV.

By signing this declaration, it is confirmed that the assessment and validation have been carried out in full compliance with the requirements of Regulations (EC) No. 1221/2009, (EU) 2017/1505 and (EU) 2018/2026, the result of the assessment and validation confirms that there is no evidence of non-compliance with the applicable environmental regulations, the data and information in the organisation's updated environmental statement provide a reliable, credible and true picture of all the organisation's activities within the scope specified in the environmental statement.

(This declaration cannot be equated with an EMAS registration. EMAS registration can only be carried out by a competent body in accordance with Regulation (EC) No 1221/2009. This declaration may not be used as a stand-alone basis for informing the public).

Gütersloh, 14.06.2024

Michael Frink
Environmental verifier
DE-V-0088

PURVerklebung



pronorm Einbauküchen GmbH
Höferfeld 5 - 7
32602 Vlotho

info@pronorm.de
www.pronorm.de

pronorm
E I N B A U K Ü C H E N